

The Response Monitoring Analysis (RMA) will be very useful to decision makers, cluster coordinators, cluster IMO's and their partners during the response. It enables them to closely monitor the response by individual clusters as well as at the collective intersectoral level, making it possible both to oversee overall response progress and drill down to the most granular details. RMA fills an important gap in the current HPC processes and maximizes the usefulness of collected HPC information by creating a bridging dashboard between the needs, planning, monitoring and financial information. It thus allows cluster coordinators to proactively track their activities where they are implemented and adjust them as needed i.e. to best cover the priority activities in the priority geographical areas identified from the needs assessment process, and the target population calculated in the planning phase. It then makes it possible to closely measure progress toward reaching the priority locations with priority activities. This will give the clusters a way to prioritize and focus interventions, or to refocus based on the progress being made.

The tool incorporates both direct humanitarian assistance such as food distribution or the provision of education materials, and indirect assistance through service provision such as installation of water treatment systems, restoration of schools. This makes it possible to answer important questions. For example, have we reached high priority locations (i.e. with highest severity score) with both essential direct assistance (measured by assisted number of people) as well as with key basic infrastructure and services? Until now, the latter has been poorly represented in response monitoring, as it is common practice to count only number of people reached and overlook service provision. This tool ensures monitoring becomes more comprehensive, looking at progress in all aspects of the response.

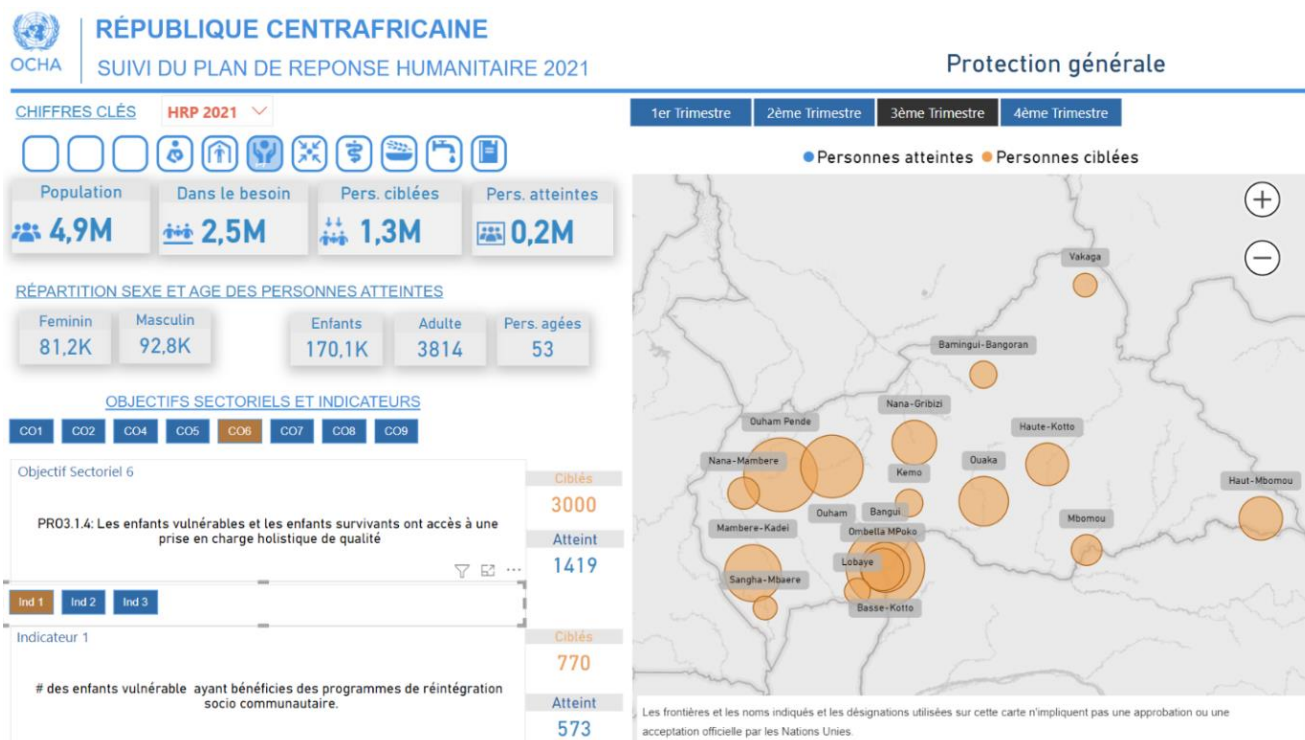
The tool also provides a quick and real time snapshot on the financial status for the operations, the clusters and the implementing organizations and their projects, which also answers key questions raised recently by the USG in Geneva – What is the impact on the affected people of the missing projects which planned to deliver key activities in priority locations but didn't receive funds? The tool can alert us to this impact and trigger action to convey a message to donors.

This tool is initially developed based on request from both CAR and Afghanistan, and then further developed and shared with other country offices to be used on voluntary basis which requires minimal configuration can quickly put in use.

Below are samples from both CAR and Afghanistan (*still drafts*). The work is in progress for incorporating new components to the dashboards.



The new Afghanistan interactive monitoring dashboard: a PowerBI interactive visualization generated through the RMA tool



CAR interactive monitoring dashboard: a PowerBI interactive visualization generated through the RMA tool