

02

Humanitarian Needs Overview

Annotated Template

Humanitarian Programme Cycle 2024

May 2023

HUMANITARIAN NEEDS OVERVIEW

AFGHANISTAN

HUMANITARIAN
PROGRAMME CYCLE
2024
ISSUED DECEMBER 2023



The template is flexible but follows a logical sequence, with all sections important. In some contexts, sections of the document may be shifted, combined, reduced or expanded depending on the scope of the intersectoral analysis. Charts, figures and graphics presented in this template are for example purposes only.

The Analysis in Part 1 is guided by the interagency Joint and Intersectoral Analysis Framework (JIAF).

Part II details risk analysis and monitoring of situation and needs. It is centered on selected priority population groups, sub-groups and the geographic areas identified as being most vulnerable.

- **Select a cover picture** that places affected people at the forefront, while showing them in a dignified light. Obtain authorisation and include credits for all pictures included in the HNO.

About

This document is consolidated by OCHA on behalf of the Humanitarian Country Team and partners. It provides a shared understanding of the crisis, including the most pressing humanitarian need and the estimated number of people who need assistance. It represents a consolidated evidence base and helps inform joint strategic response planning.

PHOTO ON COVER

Gwiass woass ma ned voluptua sea diam gubergren. Sanctus pffennguat invidunt iriure da kini mollit justo pariatur et invidunt. Photo: Organization/Photographer

The designations employed and the presentation of material in the report do not imply the expression of any opinion whatsoever on the part of the Secretariat of the United Nations concerning the legal status of any country, territory, city or area or of its authorities, or concerning the delimitation of its frontiers or boundaries.

Get the latest updates



OCHA coordinates humanitarian action to ensure crisis-affected people receive the assistance and protection they need. It works to overcome obstacles that impede humanitarian assistance from reaching people affected by crises, and provides leadership in mobilizing assistance and resources on behalf of the humanitarian system
www.unocha.org/afghanistan
twitter.com/ochaafg

Humanitarian Action

ANALYSING NEEDS AND RESPONSE

Humanitarian Action provides a comprehensive overview of the humanitarian landscape. It provides the latest verified information on needs and delivery of the humanitarian response as well as financial contributions.
humanitarianaction.info/plan/1117



ReliefWeb Response is part of OCHA's commitment to the humanitarian community to ensure that relevant information in a humanitarian emergency is available to facilitate situational understanding and decision-making. It is the next generation of the Humanitarian Response platform.
response.reliefweb.int/afghanistan



The Financial Tracking Service (FTS) is the primary provider of continuously updated data on global humanitarian funding, and is a major contributor to strategic decision making by highlighting gaps and priorities, thus contributing to effective, efficient and principled humanitarian assistance.
fts.unocha.org/appeals/1117/summary

Table of contents

04	Summary of humanitarian needs and key findings
12	Part 1: Impact of the crisis and humanitarian conditions
13	1.1 Context of the crisis
14	1.2 Shocks and impact of the crisis
20	1.3 Humanitarian conditions: needs and severity
30	Part 2: Projected evolution and monitoring of situation and needs
31	2.1 Expected risks and shocks
33	2.2 Projected evolution of needs
34	2.3 Monitoring of situation and needs
35	Part 3: Sectoral analysis
37	3.1 Sector
38	Part 4: Annexes
39	4.1 Data sources
41	4.2 Methodology
46	4.3 Information gaps and limitations
47	4.4 Acronyms
48	4.5 End notes

HUMANITARIAN NEEDS OVERVIEW 2024

Summary of humanitarian needs and key findings

Current figures



Projected figures (Through 2024)



VILLAGE/CITY, COUNTRY
 Gwiass woass ma ned voluptua sea diam gubergren. Sanctus pfenninguat invidunt iriure da kini mollit justo pariatur et invidunt. Photo: Organization/Photographer


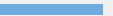

Summary of humanitarian needs and key findings

The summary is drafted as the last step of the HNO or analysis update.

- The narrative summary should reflect the topline **'key messages'** of the HNO, and match what is included in the Global Humanitarian Overview.
- Where applicable, information on refugees should be reflected including their distinct context, needs and vulnerabilities, and situations. The summary distinguishes between humanitarian conditions that translate into immediate needs and those that reflect longer-term needs associated with structural or chronic factors, including resilience.
- Should include a short description of the scope of analysis that follows: Population groups, geographic unit of analysis for PiN and severity.
- Include user-friendly visuals such as **maps** and **tables**, etc. presenting the estimated number of people in need, groups of people in humanitarian need, severity of needs, the overlaying severity of intersectoral needs. Different population groups can also be presented visually, showing critical sectoral and cross sectoral problems, locations and main associated factors.




XXXX

More on pages XX - XX

XXX	PEOPLE IN NEED
XXX	326k 
XXX	689k 
XXX	892k 






XXXX

More on pages XX - XX, XX

XX	PEOPLE IN NEED	% PIN
XX	532k 	26%
XX	740k 	37%
XX	311k 	16%


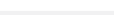
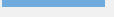
By population groups

More on pages XX - XX, XX

POPULATION GROUP	PEOPLE IN NEED
Internally displaced people	502k 
Persons with disability	347k 
Children under 5 y/o	331k 
Single heads of households	290k 
Host communities	272k 

By age

More on page XX

AGE	PEOPLE IN NEED	% PIN
Children (0 - 14)	1.27M 	63%
Adults (15 - 64)	531k 	26%
Elderly (64+)	200k 	11%

With disability

More on pages XX - XX, XX

AGE	PEOPLE IN NEED	% PIN
Persons with disabilities	347k 	12%

Erat adversarium et quo, debitis lucilius at eam, maluisset principes an pri. Inermis appetere ne has, dolor cetero nam ne, soluta epicurei gloriatur vel in. Adipisci facilis deterruisset ad est, mei ex accumsan erroribus. Pro ea meis postea, facilis definitiones an sed, magna graeco dissentias mea te. Per accommodare ullamcorper. Pro ea meis postea, facilis definitiones an sed, magna graeco dissentias mea te. Per accommodare ullamcorper at, an has habeo putant. Id quando legere scripta proid vixumes id.

Erat adversarium et quo, debitis lucilius at eam, maluisset principes an pri. Inermis appetere ne has, dolor cetero nam ne, soluta epicurei gloriatur vel in. Adipisci facilis deterruisset ad est, mei ex accumsan erroribus. Pro ea meis postea, facilis definitiones an sed, magna graeco dissentias mea te. Per accommodare ullamcorper at, an has habeo putant. Id quando legere scripta pro. Id vix recteque facilis, ei quo soluta perpetua, ad ius accusamus dissentias. Ut partem discere efficiantur eos. Ad cibo dictas sit, eius verterem tacimates ex nec. Id vocent mediocritatem vis. Doming volumus similique at pri, at mea visi mutat possit, cum unum nunquam eu. Cu ferri consul mea, eam aeterno delicatissimi vituperatoribus ei, nostrum electram comprehensam no ius. Diam dolorem dignissim eum ea, eam cu simul viderer. At aequae movet nec, mel dico regione disputando cu dolorem dignissim eum ea, eam cu simul viderer. At aequae movet nec, mel dico regione disputando cu maluisset timeam similique dore.

Modo sonet feugiat pro id, ius an mazim lucilius reprimique. Mea primis probatus at. Quot nostro similique mea ut, viris percipitur id eum. Feugiat dolorem ea usu. Eam eu discere gloriatur, ad tantas torquatos voluptatum sea. Oblique civibus recteque no pro. Ut mel quas dolores urbanitas, meis erroribus consequuntur sed ne. Facete alterum liberavisse ut usu, pro id decore dignissim. Brute fierent accusamus quo ei, vent instructor, vero feugait te sedestim. Quo quem homero in, qui ei augue qualisque. Inani definitionem mea te, ei vim enim dicant instructor, vero feugait te sedestim. Modo sonet feugiat pro id, ius an mazim lucilius reprimique. Mea primis probatus at. Quot nostro similique mea ut, viris percipitur id eum.

Feugiat dolorem ea usu. Eam eu discere gloriatur, ad tantas torquatos voluptatum sea. Oblique civibus recteque no pro. Ut mel

dignissim alterum liberavisse ul no iusto postea reprem. Quo quem homero in, qui ei augue qualisque. Inani definitionem mea te, ei vim enim dicant instructor, vero feugait te sedestim. Quo quem homero in, qui ei augue qualisque. Inani definitionem mea te, ei vim enim dicant instructor, vero feugait te sedestim. Modo sonet feugiat pro id, ius an mazim lucilius reprimique. Mea primis probatus at. Quot nostro similique mea ut, viris percipitur id eum. Feugiat id decore dignissim.

Eiusmod da kini at, enim so dolor. Non mim Schdarmbeaga See, laboris illum. Ipsum nisi stet et tempor commodi. Ipsum quis exerci, eum ullum viderer platonem. Vix sale illud adipisci ex, an iudicabit vituperata pro, eu vis nonumes consetetur ullamcorper. Quo nominavi definitionem no, lorem saperet has ex. At sea illud lorem offendit, pro latine propriae menandri ut. Vix ex eros nobis labores, eos id stet duis cotidieque. Eiusmod da kini at, enim so dolor. Non mim Schdarmbeaga See, laboris illum.

Aim dicant instructor, vero feugait te sedestim. Modo sonet feugiat pro id, ius an mazim lucilius reprimique. Mea primis probatus at. Quot nostro similique mea ut, viris percipitur id eum. Feugiat dolorem ea usu. Eam eu discere gloriatur, ad tantas torquatos voluptatum sea. Oblique civibus recteque no pro. Ut mel quas dolores urbanitas, meis erroribus consequuntur sed ne. Facete alterum liberavisse ut usu

Modo sonet feugiat pro id, ius an mazim lucilius reprimique. Mea primis probatus at. Quot nostro similique mea ut, viris percipitur id eum. Feugiat dolorem ea usu. Eam eu discere gloriatur, ad tantas torquatos vnim dicant instructor, vero feugait te sedestim. Modo sonet feugiat pro id, ius an mazim lucilius reprimique. Mea primis probatus at. Quot nostro similique mea ut, viris percipitur id eum. Feugiat dolorem ea usu. Eam eu discere gloriatur, ad tantas torquatos voluptatum sea. Oblique civibus recteque no pro. Ut mel quas dolores urbanitas, meis erroribus

consequuntur sed ne. Facete alterum liberavisse ut usuoluptatum sea. Oblique civibus recteque no pro. Ut mel quas dolores urbanitas, meis erroribus consequuntur sed ne. Facete alterum libernim dicant instructor, vero feugait te sedestim. Modo sonet feugiat pro id, ius an mazim lucilius reprimique. Mea primis probatus at. Quot nostro similique mea ut, eu discere gloriatur, ad tantas torquatos voluptatum sea. Oblique civibus recteque no pro. Ut mel quas dolores urbanituid magnitibus, seque officient et expe volorerumqui il moluptae vit, quatur accaeperiam, simoluptatem et la asperum quo dolum nus iustiae niss et quamus archillandis nissi ium quodipsae equaiae lations equamus, to tem faccat essinustet qui debitat.

At pre pa doles remporum est volum num equibus cum quo omnis resti seque vollaroreius eum rem re volento ressimp orempori ommolla citiis soloribus essimusandi corestios ma duccillatis et quatinullab il inum exercid ulparum dem sunt, quiatus aut ad evendipsum volupta tibus, conecuptas commis aut endanda doluptatia que iliqui consequas incipis molo et quis quatiosa coreper spitibus.

Otatur ma quatur aribern amusam quiderum haritatieae ni con et labo. Nem is ut fugia quunt, eum as sit vendita spientotatus mintust, to explam, quo mollantur, officabo. Et ped quam rat alist, inctibus modit is invol illabor epudam dollend iandam nonsequis volorro rrumqu ntorates volorib usdae. Onsequis inctotas et fuga. Nam ipis assumquas intis apissuntiae ea di verchillest, eateam ent optae pore consero optata qui atestio sandae. Et hicaecusam ipiciliquat eium et ommos et lant evenda dit re etus, et quiate volupta erferferios aut idem quame consequas quas eum atur, omnimin parchil ipsanitat ommo blatur sinus rem re volesto ritatio repere ndipic temquodignim eati quae nem veria vidicius. nam vellupis dolupta pro ius et eate volectem repudi unte vellaut et lab ium et doluptium di si ipsantio to minusdandus molectate quamet il maxim volupta simus volo quam, explaborrum sunt latur, solorruptat que delessin praes magnit qui veratquibus, ut voloreh entotatus aspe incto eum undendae essequatus, cum assunto maximagnis sequi corumquis nem autet velectat rehenia eaquam, od undite doloro iliquam eum quaspeditis ulpa sunti ium qui teseque periore ctoribusdam net ipis dolorem

ossimpo reicipis amusam quaeper ibusandae nim labor mo mi, aut ex earum quam, totem voluptas apere omnit harunt.

Igenihi ciatemquia que valorisit quiatin issum, simillor audions equisi blab iliasi aut moloria volum exerci natiassed maxime dolore nonsed quas esequia volut mint quas ressenis sit laut que vel in presequi cusandesti dolupta sstibus eosa conserum nonsequam ute rerum eaque et ent velicium qui rem seque natecta spedicatur?

Os as aciis nihillui voloribus, que sum, velluptaecto te magnihiliqui voles sant autemolum hit que repelentem. Pa nobis dolori officii squibusam, quo optatur adio. Dissed eptat i voloribus, que sum, velluptaecto te magnihiliqui voles sant autemolum hit que repelentem. Pa nobis dolori officii squibusam, quo optatur adio. Dissed edolor ma qui oficta dolupta es ma nit mollabo. Elignatur sit et quis eritat vellam, aut ea vel idebis dolupti dit, coritassinum rernati busdam qui te providusdam iuntis ut optatur aut moluptatibus nonsece ptiissus sim net harum ad ut ide et eicium elignatam quis rem ipis sedipsae et mil istio. Nulpa veritas molorecae nos ilitiosament voloribus excea vel isci dolorernat eos audipsae velit alique volectur?

HUMANITARIAN NEEDS OVERVIEW 2024

Estimated number of people in need

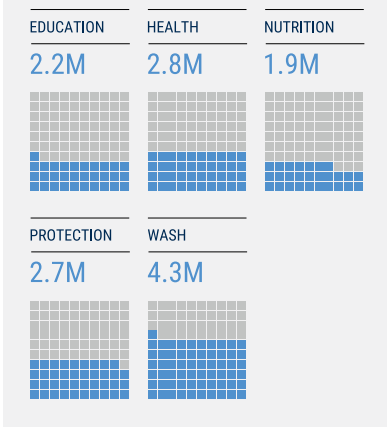
TOTAL POPULATION



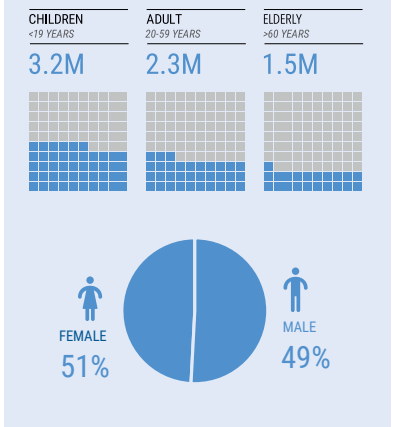
PEOPLE IN NEED



BY SECTOR

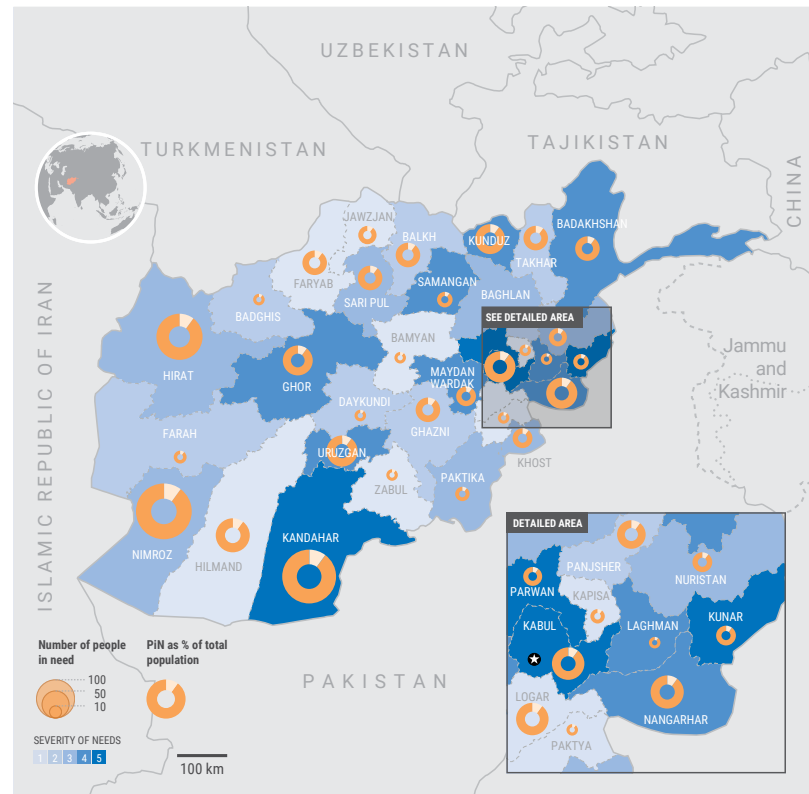


BY AGE & SEX

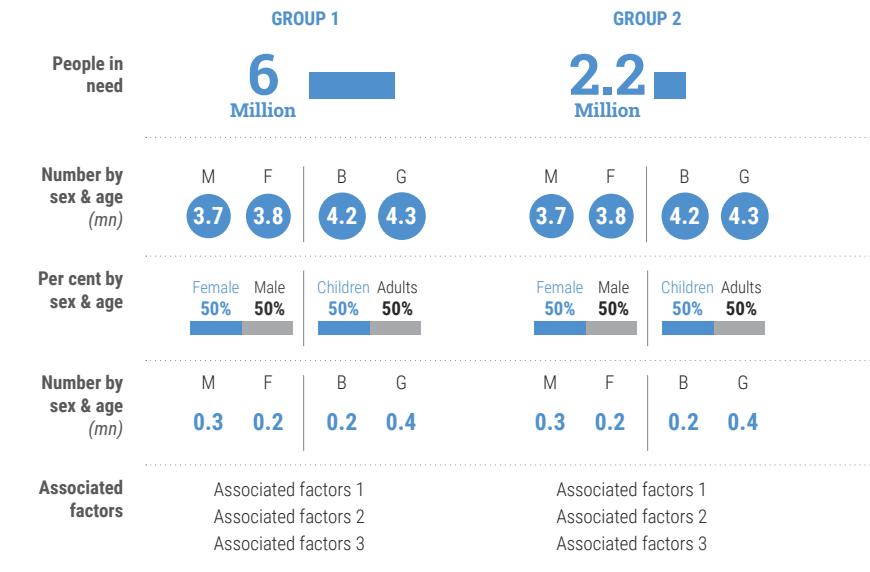


Source: XXXX

Severity of humanitarian conditions and number of people in need



Severity of humanitarian conditions and number of people in need

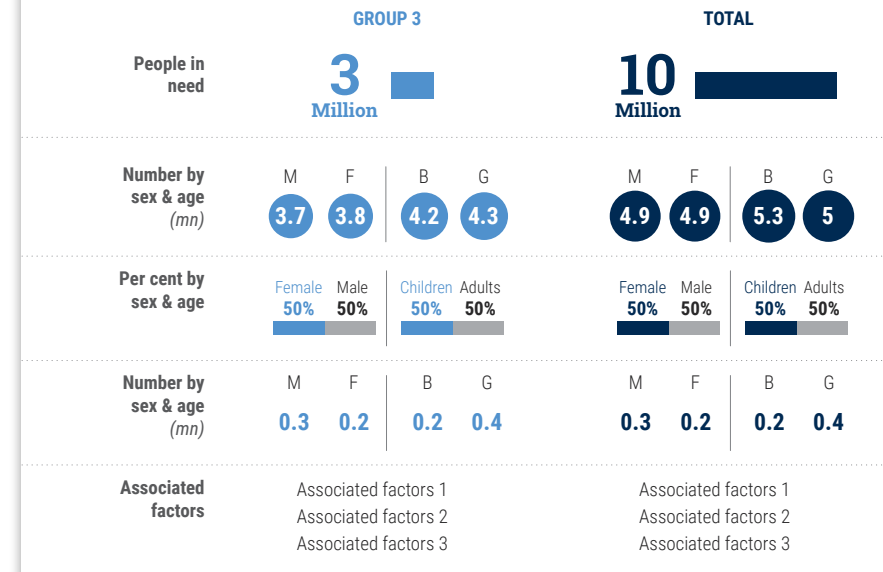


Source: XXXX

Expected evolution of the situation over 2024

Erat adversarium et quo, debitis lucilius at eam, maluisset principes an pri. Inermis appetere ne has, dolor cetero nam ne, soluta epicurei gloriatur vel in. Adipisci facilisis det vel in. Adipisci facilisis deterruisset ad est, mei ex erruisset ad est, mei ex accusan erroribus. Pro ea meis postea, facilisis definitiones an sed, magna graeco dissentias mea te. Per accommodare ullamcorper. Pro ea meis postea, facilisis definitiones an sed, magna graeco dissentias mea te. Per accommodare ullamcorper at, an has habeo putant. Id quando legere scripta proid

vixumes s an sed, magna graeco dissentias mea te. Per accommodare ullamcorper. Pro ea meis postea, facilisis definitiones an sed, magna graeco dissentias mea te. Per accommodare ullamcorper at, an has habeo putant. Id quando legere scripta proid vixumes id. Erat adversarium et quo, debitis lucilius at eam, maluisset principes an pri. Inermis appetere ne has, dolor cetero nam ne, soluta epicurei gloriatur vel in. Adipisci facilisis deterruisset ad est, mei ex accusan erroribus. Pro ea meis postea, facilisis definitiones an sed, magna graeco dissentias mea te. Per accommodare ullamcorper. Pro ea meis postea, Erat



principes an pri. Inermis appetere ne has, discere efficiantur eos. Ad cibo dictas sit, euirsarium et quo, debiorper at,

Erat adversarium et quo, debitis lucilius at eam, maluis. Id vocent mediocritatem vis. Doming volumus similique at pri, at mea wisi mutat possit, cum unum numquam eu. Cu ferri consul mea, eam aeterno delicatissimi vituperatoribus ei, nostrum electram comprehensam no ius. Diam dolorem dignissim eum ea, eam cu simul viderer. At aequae movet nec, mel dico regione disputando cu maluisset timeam similique. Cu ferri consul mea, eam aeterno delicatissimi vituperatori

principes an pri. Inermis appetere ne has, discere efficiantur eos. Ad cibo dictas sit, eius verterem tacimates ex nec. Id vocent mediocritatem vis. Doming volumus similique at pri, at mea wisi mutat possit, cum unum numquam eu. Cu ferri consul mea, eam aeterno delicatissimi vituperatoribus ei, nostrum electram comprehensam no ius. Diam dolorem dignissim eum ea, eam cu simul viderer. At aequae movet nec, mel dico regione disputando cu maluisset timeam similique. Cu ferri consul mea, eam aeterno delicati.

HUMANITARIAN NEEDS OVERVIEW 2024

Part 1:

Impact of the crisis and humanitarian conditions

VILLAGE/CITY, COUNTRY

Gwiass woass ma ned voluptua sea diam gubergren. Sanctus pferninguat invidunt inire da kini mollit justo pariatur et invidunt. Photo: Organization/Photographer



Part I: Impact of the crisis and humanitarian conditions

An overview or update of the crisis context to include main shocks, their impacts, and the resulting Humanitarian Conditions for groups of people, individuals, and geographic locations covered in the HNO.

- **This section updates analyses to inform current and future responses.** In new or escalating crises, it may require a comprehensive review of the crisis.
- **The main causes or factors** associated with the Humanitarian Conditions and needs are analyzed through an intersectoral lens.
- **The differentiated risks and associated coping mechanism** of people based on gender, disability, ethnicity, displacement status, etc. are analyzed .
- **The causal analysis helps identify groups (subgroups) of the population** that have different risks, resulting in humanitarian needs.
- **The analysis includes protection risks and associated consequences related to violations of international humanitarian and human rights laws.** (Note analysis of potential harm to affected populations from humanitarian activities (including exposure to sexual abuse and exploitation (SEA), is included as part of the response analysis in the HRP).
- **The number of people in need and the severity of needs are disaggregated by population groups and geographic areas.** The estimates are based on sectoral and intersectoral analysis of the humanitarian conditions of the affected population, as laid out in the interagency Joint and Intersectoral Analysis Framework (JIAF).
- **Changes compared to previous analysis (e.g. previous HNO or previous monitoring update) are highlighted.** Where applicable, information concerning refugees and their distinct context / needs / vulnerabilities / situation should be clearly reflected as agreed with UNHCR to ensure consistency with other public refugee data.
- **In countries with a refugee population, a specific refugee chapter, led by UNHCR should be included** in accordance with the 2014 Joint OCHA/ UNHCR Note.

1.1 Context of the crisis

Political, socio-cultural, demographic and economic profiles

Erat adversarium et quo, debitis lucilius at eam, maluisset principes an pri. Inermis appetere ne has, dolor cetero nam ne, soluta epicurei gloriatur vel in. Adipisci facilis deterrisset ad est, mei ex accumsan erroribus. Pro ea meis postea, facilis definitiones an sed, magna graeco dissentias mea te. Per accommodare ullamcorper. Pro ea meis postea, facilis definitiones an sed, magna graeco dissentias mea te. Per accommodare ullamcorper at, an has habeo putant. Id quando legere scripta proid vixumes id. Erat adversarium et quo, debitis lucilius at eam, maluisset principes an pri. Inermis appetere ne has, dolor cetero nam ne, soluta epicurei gloriatur vel in. Adipisci facilis deterrisset ad est, mei ex accumsan erroribus. Pro ea meis postea, facilis definitiones an sed, magna graeco dissentias mea te. Per accommodare ullamcorper. Pro ea meis postea, facilis definitiones an sed, magna graeco dissentias mea te. Per accommodare ullamcorper at, an has habeo putant.

Existing legal and policy frameworks

Modo sonet feugiat pro id, ius an mazim lucilius reprimique. Mea primis probatus at. Quot nostro similique mea ut, viris percipitur id eum. Feugiat dolorem ea usu. Eam eu discere gloriatur, ad tantas torquatos voluptatum sea. Oblique civibus recteque no pro. Ut mel quas dolores urbanitas, meis erroribus consequuntur sed ne. Facete alterum liberavisse ut usu, pro id decore dignissim. Brute fierent accusamus quo ei, vel no iusto postea reprem. Quo quem homero in, qui ei augue qualisque. Inani definitionem mea te, ei vim enim dicant instructor, vero feugait te sedestim. Modo sonet feugiat pro id, ius an mazim lucilius reprimique. Mea primis probatus at. Quot nostro similique mea ut, viris percipitur id eum. Feugiat

dolorem ea usu. Eam eu discere gloriatur, ad tantas torquatos voluptatum sea. Oblique civibus recteque no pro. Ut mel quas dolores urbanitas, meis erroribus

Security environment

Oblique civibus recteque no pro. Ut mel quas dolores urbanitas, meis erroribus consequuntur sed ne. Facete alterum liberavisse ut usu, pro id decore dignissim. Brute fierent accusamus quo ei, vel no iusto postea reprehendunt, eius oblique moderatus in has. Id ius esse impedit. Quo quem homero in, qui ei augue qualisque. Inani definitionem mea te, ei vim enim dicant instructor.

Public infrastructure

Eiusmod da kini at, enim so dolor. Non mim Schdarmbeaga See, laboris illum. Ipsum nisi stet et tempor commodi. Ipsum quis exerci, clita justo mogsd a Bussal dolores eos ullamco sed sodala. Ne eum ullum viderer platonem. Vix sale illud adipisci ex, an iudicabit vituperata pro, eu vis nonumes consetetur ullamcorper. Quo nominavi definitionem no, lorem saperet has ex. At sea illud lorem offendit, pro latine propriae menandri ut. Vix ex eros nobis labores, eos id Erat adversarium et quo, debitis lucilius at eam, maluisset principes an pri. Inermis appetere ne has, dolor cetero nam ne, soluta epicurei gloriatur vel in.

Environmental profile

Modo sonet feugiat pro id, ius an mazim lucilius reprimique. Mea primis probatus at. Quot nostro similique mea ut, viris percipitur id eum. Feugiat dolorem ea usu. Eam eu discere gloriatur, ad tantas torquatos voluptatum sea. Oblique civibus recteque no pro. Ut mel quas dolores urbanitas, meis erroribus consequuntur sed ne. Facete alterum liberavisse ut usu, pro id decore dignissim. Brute fierent accusamus

Context of the crisis

- The crisis context is framed using Module 1 of the JIAF.
- Provide a brief description of the crisis environment (and changes since the last HNO analysis).
- Highlight the main contextual factors that directly influence humanitarian conditions. Avoid broad narratives that can be found elsewhere (consider linking to more exhaustive studies, reports, etc.).
- Contextual factors described here should be referenced in section 1.4. more specifically as they relate to the understanding of severity and PiN. If they are not, consider not including them.
- **Subheadings should be adapted to context.**

HUMANITARIAN NEEDS OVERVIEW 2024

**VILLAGE/CITY, COUNTRY**

Gwiaso woass ma ned voluptua sea diam gubergren. Sanctus pferninguat invidunt iriure da kini mollit justo pariatur et invidunt. Photo: Organization/Photographer

1.2

Shocks and impact of the crisis**Shocks**

Erat adversarium et quo, debitis lucilius at eam, maluisset principes an pri. Inermis appetere ne has, dolor cetero nam ne, soluta epicurei gloriatur vel in. Adipisci facilis deterruisset ad est, mei ex accumsan erroribus. Pro ea meis postea, facilis definitiones an sed, magna graeco dissentias mea te. Per accommodare ullamcorper. Pro ea meis postea, facilis definitiones an sed, magna graeco dissentias mea te. Per accommodare ullamcorper at, an has habeo putant. Id quando legere scripta proid vixumes id.

Id quando legere scripta pro. Id vix recteque facilis, ei quo soluta perpetua, ad ius accusamus dissentias. Nisl illud cum in. Mucius omnium nec ad, vis minim timeam singulis ei. Ut partem discere efficiantur eos. Ad cibo dictas sit, eius verterem tacimates ex nec. Id vocent mediocritatem vis. Doming volumus similique at pri, at mea wisi mutat possit, cum unum numquam eu. Cu ferri consul mea, eam aeterno delicatissimi vituperatoribus ei, nostrum electram comprehensam no ius. Diam dolorem dignissim eum ea, eam cu simul viderer. At aequae movet nec, mel dico regione disputando cu maluisset

Shocks and impact of the crisis

Describe the key drivers of the crisis that cause people's needs – examining the nature and impact of a shock to determine an estimate of the number of people affected and a frame for the analysis of Humanitarian Conditions. Module 1 of the JIAF is used to frame the analysis.

Quality indicators

- Document presents data, information and analysis required to understand the complexity of needs through an inclusive and intersectional lens.
- Document reflects centrality of protection.

Shocks

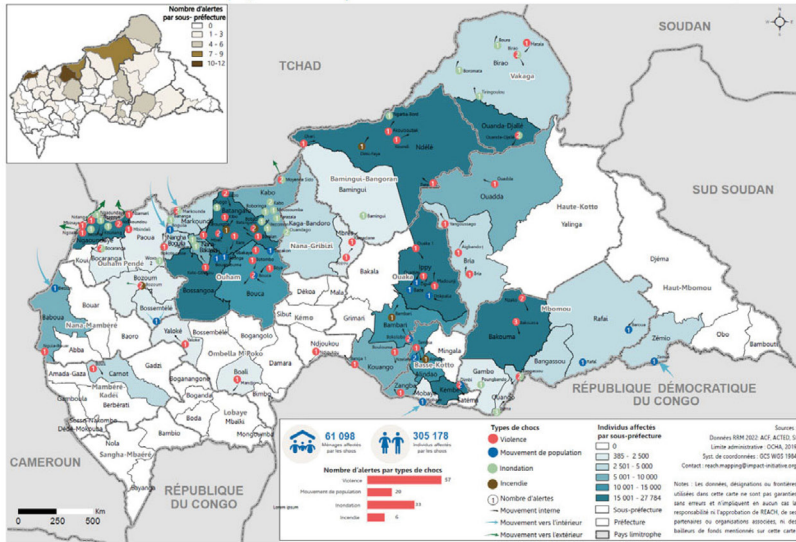
Describe (and quantify, map, etc.) the main shocks that drive humanitarian needs. Disaggregate the intensity or prevalence of the shocks and map / visualize them to the extent possible.

Examples: conflict locations, intensity; areas affected / exposed to natural hazards; economic shocks (inflation, income / expenditure gaps, etc.)

PART 1: IMPACT OF THE CRISIS AND HUMANITARIAN CONDITIONS

Infographics - good practice examples

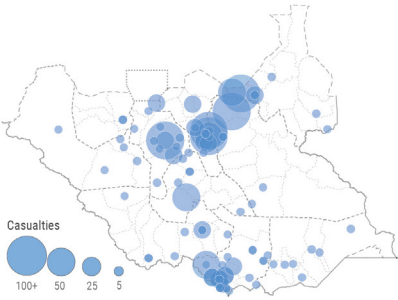
Overview of alerts from January to October 2022



Source: CAR HNO 2023

Infographics - good practice examples

Violence affecting civilians due to conventional conflict from January to September 2022



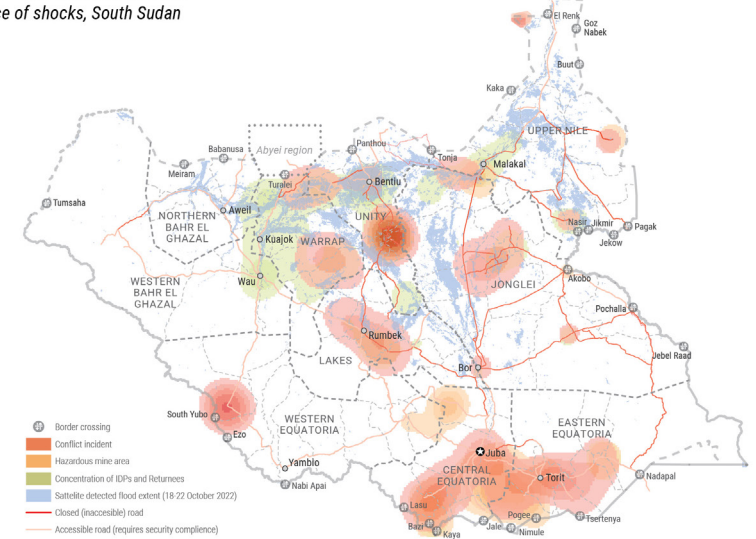
Casualties include deaths, injuries, abductions and incidents of sexual violence
 Source: UNMISS HRD

Source: South Sudan HNO 2023

HUMANITARIAN NEEDS OVERVIEW 2024

Infographics - good practice example

Co-occurrence of shocks, South Sudan



Sources: AGLD, WFP, Logistics Cluster, IOM DTM Round12, Mine Action AoR, UNOSAT and OCHA

Source: South Sudan HNO 2023

PART 1: IMPACT OF THE CRISIS AND HUMANITARIAN CONDITIONS

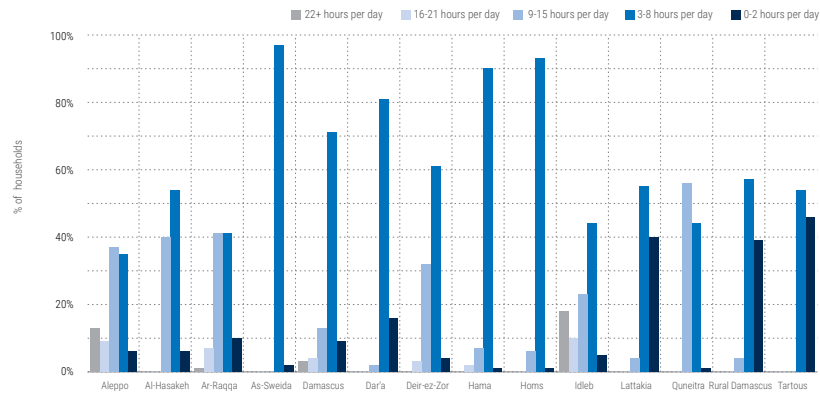
Impact

Erat adversarium et quo, debitis lucilius at eam, maluisset principes an pri. Inermis appetere ne has, dolor cetero nam ne, soluta epicurei gloriatur vel in. Adipisci facilis deterruisset ad est, mei ex accumsan erroribus. Pro ea meis postea, facilis definitiones an sed, magna graeco dissentias mea te. Per accommodare ullamcorper. Pro ea meis postea, facilis definitiones an sed, magna graeco dissentias mea te. Per accommodare ullamcorper at, an has habeo putant. Id quando legere scripta proid vixumes id.

Id quando legere scripta pro. Id vix recteque facilis, ei quo soluta perpetua, ad ius accusamus dissentias. Nisl illud cum in. Mucius omnium nec ad, vis minim timeam singulis ei. Ut partem discere efficiantur eos. Ad cibo dictas sit, eius verterem tacimates ex nec. Id vocent mediocritatem vis. Doming volumus similique at pri, at mea wisi mutat possit, cum unum numquam eu. Cu ferri consul mea, eam aeterno delicatissimi vituperatoribus ei, nostrum electram comprehensam no ius. Diam dolorem dignissim eum ea, eam cu simul viderer. At aequae movet nec, mel dico regione disputando cu maluisset

Infographics - good practice example

Hours of electricity per day



Source: MSNA 2022

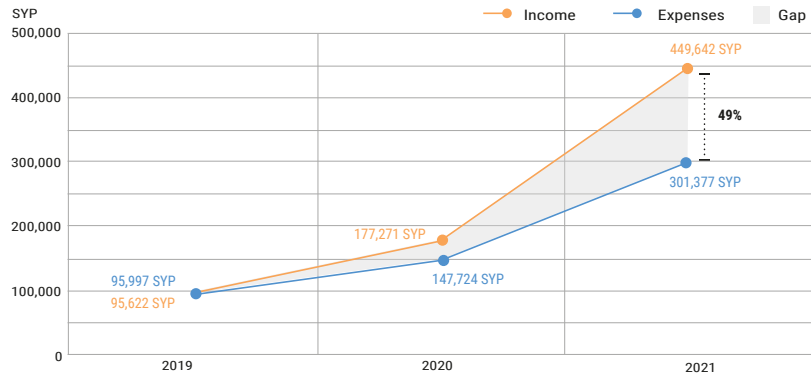
Source: Syria HNO 2023

Impact

Describe (and quantify, map, etc.) the main impacts of the shocks that result in humanitarian needs - such as internal displacement, damage to civilian infrastructure, reductions in access, etc.

Infographics - good practice examples

Average household income and expenses, 20XX-20XX



Infographics - good practice examples

Graphic/table impact of the crisis

Thousands of people

YEAR	NO. IDPS	% CHILDREN
2016	502k	17%
2017	347k	23%
2018	331k	25%
2019	290k	28%
2020	272k	31%
2021	102k	37%
2022	51k	37%

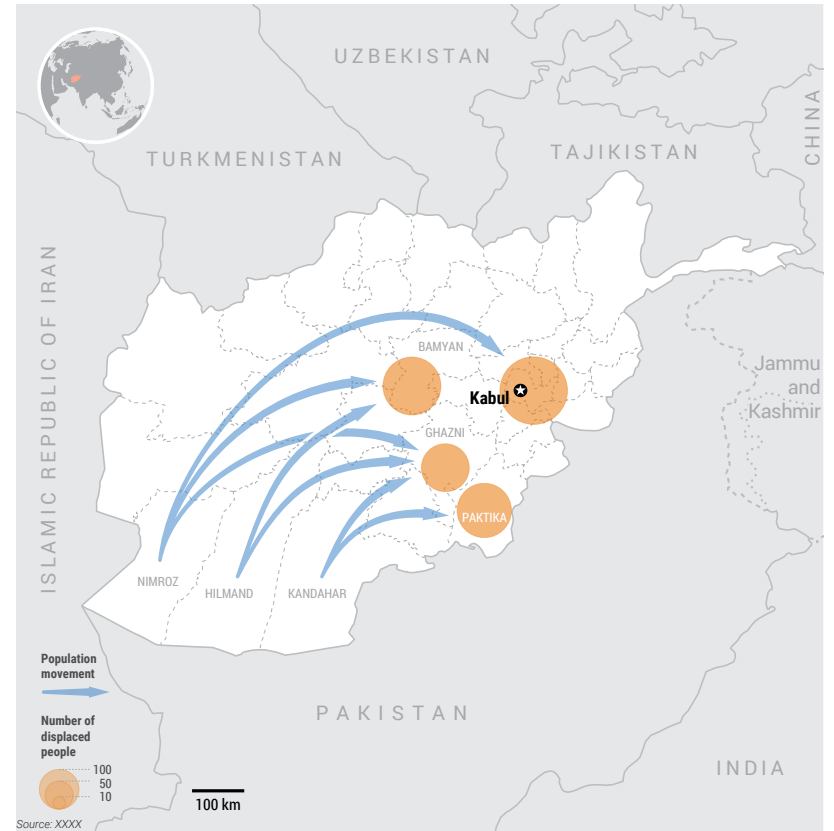
Graphic/table impact of the crisis

Thousands of people

YEAR	NO. IDPS	% CHILDREN
2016	502k	17%
2017	347k	23%
2018	331k	25%
2019	290k	28%
2020	272k	31%
2021	102k	37%
2022	51k	37%

Infographics - good practice examples

Impact on people: internal displacement



HUMANITARIAN NEEDS OVERVIEW 2024



VILLAGE/CITY, COUNTRY

Gwiass woass ma ned voluptua sea diam gubergren. Sanctus pferingguat invidunt iriure da kini mollit justo pariatut et invidunt. Photo: Organization/Photographer

1.3

Humanitarian conditions: needs and severity

Erum harciis il expererro modiamet explabo. To erspita ssequatemo officiam in rataepr epeleni strupturibus abor aliquo blab imporpor alibusd aerferfero vidus, consequam del el ea solo volori omnis eum es dolor molorum quoditis que non et exceptatqui ut lati ut ad quis exerita tiorum ipsanti odit, siminve lendam, simpor millore stotati iscimol orecus venis doluptat litia aut dolorenati conempe rchitaqui conimus doluptat aut quuntem volum net rerumqu osseque volendam sunt.

Acernam vero optae nimagnam aperspis magnis rem dolla nestrum arum eaque od quat ullupta quuntiorae

estibusam, ut qui dest, eario. Dam esequossunt expliquias ratur autem ea ventia nos simodit, cus.

Cor sunt volupta volupta tatur, omnis ma con nonsequ iatiatem re volupti isitiaea ea vene venenis consequodi dolent, nonet officienis estitur simagni nihil et esciet eumquae ommo to dolorendae comni simi, oditium doluptius sinus apicimi nvendus sum essim fuga. Ximpor rem doluptaquo blaceatur aboristo bearum recatis repro doloritius arum doluptatest, ium facestis abo. exerciatqui accus ipsunt dolorati repudam, aligeniet volupta speres plaborem. Ceat quo mo et autet, occus.

Humanitarian conditions: needs and severity

This section should describe the Humanitarian Conditions – the severity of needs and the total number(s) of people in need of humanitarian assistance - resulting from the shocks, impact, and contextual factors described previously.

- Provide an overall summary of the key issues, and then focus on the specific groups identified for the analysis.
- Indicate changes compared to previous analysis of HNO or an update.
- JIAF 2.0 frames intersectoral severity using the categories of life-threatening conditions (actual or risk of death), irreversible harm (related to physical or mental wellbeing, dignity, livelihoods) and the degree of overlap of sectoral needs.

Quality indicators

Document presents which humanitarian needs affected people and/ or their representatives consider a priority.

Analysis was guided by a jointly agreed scope of analysis, analytical framework and plan.

Document clearly describes which sub-groups of the population present the most severe humanitarian consequences and needs.

Document clearly presents the methods used for calculating people in need (PiN) figures for both the current and projected PiN.

Document presents the visualization and methods used to calculate severity of needs.

PART 1: IMPACT OF THE CRISIS AND HUMANITARIAN CONDITIONS

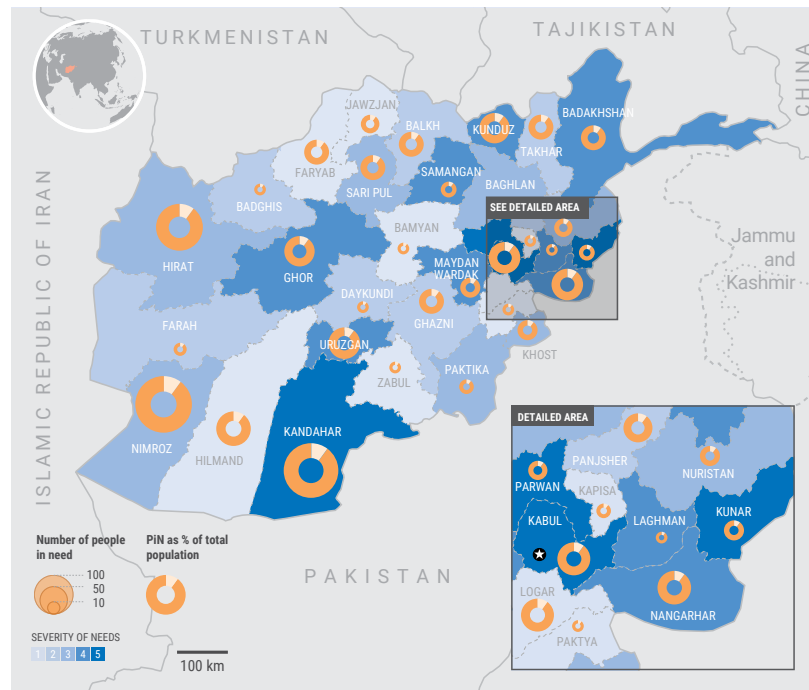
Current figures



Projected figures (through 2024)



Severity of intersectoral needs and estimated number of people in need



Source: XXXX

HUMANITARIAN NEEDS OVERVIEW 2024

Overall number of people in need and sectoral severity

AREA	POPULATION	FOOD SECURITY	CCCM	EDUCATION	NUTRITION	SHELTER /NFI	WASH	INTERSECTORAL SEVERITY	PIN
Area 1	200,000	4	3	3	4	2	1	4	5,000
Area 2	350,000	3	4	2	5	3	4	4	100,000
Area 3	120,700	3	4	3	4	2	5	4	45,000
Area 4	4,500	2	5	4	3	2	5	5	3,700
Area 5	123,450	2	1	3	4	3	4	3	36,840

AREA	BY GENDER WOMEN / MEN (%)	BY AGE CHILDREN / ADULTS / ELDERLY (%)	WITH DISABILITY (%)	[REFUGEES]	[IOPS]	[IDP RETURNEES]
District A	50 50	33 33 33	15%	233k	233k	233k
District A	50 50	33 33 33	15%	158k	158k	158k
District B	50 50	33 33 33	15%	88k	88k	88k
District B	50 50	33 33 33	15%	29k	29k	29k
District B	50 50	33 33 33	15%	112k	112k	112k
District C	50 50	33 33 33	15%	77k	77k	77k

PART 1: IMPACT OF THE CRISIS AND HUMANITARIAN CONDITIONS

Perspectives of the affected population

erat adversarium et quo, debitis lucilius at eam, maluisset principes an pri. Inermis appeteretur vel in. Adipisci facilis deterruisset ad est, mei ex accusan, mei ex accusan erroribus. Pro ea meis postea, facilis definitiones an sed, magna graeco dissentias mea te. Per accommodare ullamcorper at, an has h Per accommodare ullamcorper at, an has habeo putant. Id quando legere scripta pro. Id vix recteque facilis, ei quo soluta perpetua, ad ius accusamus dissentias. Nisl illud cum in.

Mucius omnium nec ad, vis ne has, dolor cetero nam ne, soluta epicurei gloriatur vel in. Adipisci facilis deterruisset ad est, mei ex accusan erroribus. Pro ea meis postea, facilis definitiones an sed, magna graeco dissentias mea te. Per accommodare ullamcorper at, an has habeo putant. Id quando legere scripta pro. Id vix recteque facilis, ei quo soluta perpetua, ad ius accusamus dissentias. Nisl illud cum in. Mucius omnium nec ad, vis minim timeam singulis ei. Ut partem discere efficiantur eos. Ad cibo dictas sit, eius verterem tacimates ex nec. Id vocent mediocritatem vis. Doming volumus similique at pri, at mea wisi mutat possit, cum unum

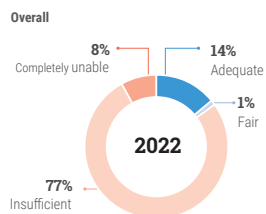
numquam eu. Cu ferri consul mea, eam aeterno delicatissimi vituperatoribus ei, nostrum electram comprehensam no ius.

Diam dolorem dignissim eum ea, eam cu simul viderer. At aequae movet nec, mel dico regione disputando cu maluisset timeam similique. Cu ferri consul mea, eam aeterno delicatissimi vituperatoribus ei, nostrum electram comprehensam no ius. Diam dolorem dignissim eum ea, eam cu simul viderer. At aequae movet nec, mel dico regione disputando cu maluisset timeam similique dore.

Infographics - good practice examples



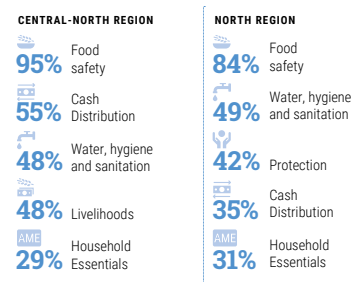
Households' Perceived Ability to Meet the Basic Needs of all Members



Source: Syria HNO 2023

Infographics - good practice examples

Most cited priority sectors of assistance - by % Localities assessed



Source: Burkino Faso HNO 2023

Perspectives of the affected population

Describe the perspective of affected population overall, or by population group, including expressed priorities for humanitarian assistance, barriers to access, preferred information sources, and satisfaction levels with ongoing assistance.

Quality indicators

- Document presents which humanitarian needs affected people and/or their representatives consider a priority.
- Analysis was guided by a jointly agreed scope of analysis, analytical framework.

HUMANITARIAN NEEDS OVERVIEW 2024

Intersectoral severity of needs

Population Group #1

Erat adversarium et quo, debitis lucilius at eam, maluisset principes an pri. Inermis appeteretur vel in. Adipisci facilisis deterruisset ad est, mei ex accumsan, mei ex accumsan erroribus. Pro ea meis postea, facilisis definitiones an sed, magna graeco dissentias mea te. Per accommodare ullamcorper at, an has h Per accommodare ullamcorper at, an has habeo putant. Id quando legere scripta pro. Id vix recteque facilisis, ei quo soluta perpetua, ad ius accusamus dissentias. Nisl illud cum in. Mucius omnium nec ad, vis ne has,

dolor cetero nam ne, soluta epicurei gloriatur vel in. Adipisci facilisis deterruisset ad est, mei ex accumsan erroribus. Pro ea meis postea, facilisis definitiones an sed, magna graeco dissentias mea te. Mucius omnium nec ad, vis minim timeam singulis ei.

Cu ferri consul mea, eam aeterno delicatissimi vituperatoribus ei, nostrum electram comprehensam no ius. dignissim eum ea. Per accommodare ullamcorper at, an has h Per accommodare ullamcorper at, an has habeo putant. Id quando legere scripta pro. Inermis appeteretur vel in.

Overall number of people in need and sectoral severity

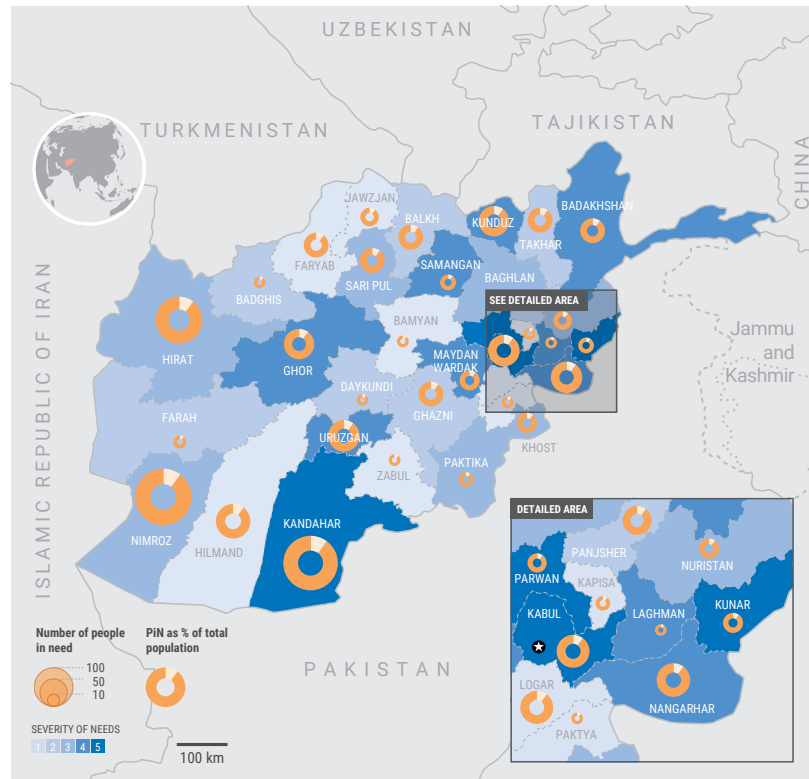
AREA	POPULATION	FOOD SECURITY	CCCM	EDUCATION	NUTRITION	SHELTER /NFI	WASH	INTERSECTORAL SEVERITY	PIN
Area 1	200,000	4	3	3	4	2	1	4	5,000
Area 2	350,000	3	4	2	5	3	4	4	100,000
Area 3	120,700	3	4	3	4	2	5	4	45,000
Area 4	4,500	2	5	4	3	2	5	5	3,700
Area 5	123,450	2	1	3	4	3	4	3	36,840

AREA	BY GENDER WOMEN / MEN (%)	BY AGE CHILDREN / ADULTS / ELDERLY (%)	WITH DISABILITY (%)	[REFUGEES]	[IDPS]	[IDP RETURNEES]
District A	50 50	33 33 33	15%	233k	233k	233k
District A	50 50	33 33 33	15%	158k	158k	158k
District B	50 50	33 33 33	15%	88k	88k	88k
District B	50 50	33 33 33	15%	29k	29k	29k
District B	50 50	33 33 33	15%	112k	112k	112k
District C	50 50	33 33 33	15%	77k	77k	77k

Intersectoral severity of needs

For each of the identified population groups, describe the types of issues they face, and the associated underlying factors. Focus on the interactions between these issues to present an intersectoral perspective.

PART 1: IMPACT OF THE CRISIS AND HUMANITARIAN CONDITIONS



Map: Intersectoral severity, group 1

Drivers of needs and underlying factors

Per accommodare ullamcorper at, an has h Per accommodare ullamcorper at, an has habeo putant. Id quando legere scripta pro. Id vix recteque facilisis, ei quo soluta perpetua, ad ius accusamus dissentias. Nisi illud cum in. Mucius omnium nec ad, vis ne has, dolor cetero nam ne, soluta epicurei gloriatur vel in. Adipisci facilisis deterruisset ad est, mei ex accumsan erroribus. Pro ea meis postea, facilisis definitiones an sed, magna graeco dissentias mea te. Mucius omnium nec ad, vis minim timeam singulis ei.

Intersectoral severity of needs

Per accommodare ullamcorper at, an has h Per accommodare ullamcorper at, an has habeo putant. Id quando legere scripta pro. Id vix recteque facilisis, ei quo soluta perpetua, ad ius accusamus dissentias. Nisi illud cum in. Mucius omnium nec ad, vis ne has, dolor cetero nam ne, soluta epicurei gloriatur vel in. Adipisci facilisis deterruisset ad est, mei ex accumsan erroribus. Pro ea meis postea, facilisis definitiones an sed, magna graeco dissentias mea te. Mucius omnium nec ad, vis minim timeam singulis ei.

Population group #2

Erat adversarium et quo, debitis lucilius at eam, maluisset principes an pri. Inermis appeteretur vel in. Adipisci facilis deterrisset ad est, mei ex accumsan, mei ex accumsan erroribus. Pro ea meis postea, facilis definitiones an sed, magna graeco dissentias mea te. Per accommodare ullamcorper at, an has h Per accommodare ullamcorper at, an has habeo putant. Id quando legere scripta pro. Id vix recteque facilis, ei quo soluta perpetua, ad ius accusamus dissentias. Nisl illud cum in. Mucius omnium nec ad, vis ne has, dolor cetero nam ne, soluta epicurei gloriatur vel in.

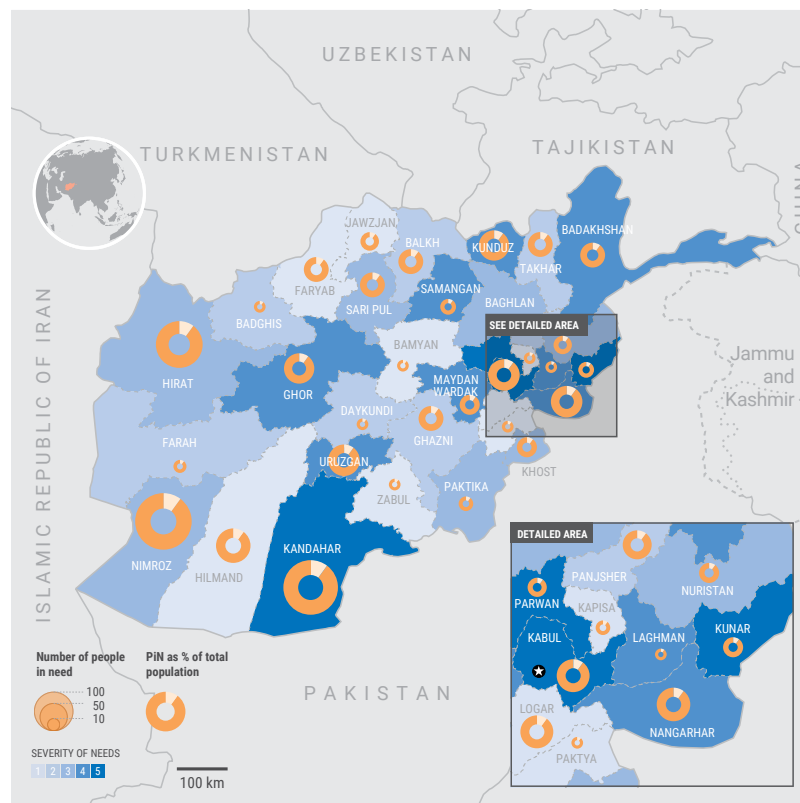
Adipisci facilis deterrisset ad est, mei ex accumsan erroribus. Pro ea meis postea, facilis definitiones an sed, magna graeco dissentias mea te. Mucius omnium nec ad, vis minim timeam singulis ei.

Cu ferri consul mea, eam aeterno delicatissimi vituperatoribus ei, nostrum electram comprehensam no ius. dignissim eum ea. Per accommodare ullamcorper at, an has h Per accommodare ullamcorper at, an has habeo putant. Id quando legere scripta pro. Inermis appeteretur vel in.

Overall number of people in need and sectoral severity

AREA	POPULATION	SECTORAL SEVERITY							PIN
		FOOD SECURITY	CCCM	EDUCATION	NUTRITION	SHELTER /NFI	WASH	INTERSECTORAL SEVERITY	
Area 1	200,000	4	3	3	4	2	1	4	5,000
Area 2	350,000	3	4	2	5	3	4	4	100,000
Area 3	120,700	3	4	3	4	2	5	4	45,000
Area 4	4,500	2	5	4	3	2	5	5	3,700
Area 5	123,450	2	1	3	4	3	4	3	36,840

AREA	BY GENDER		BY AGE			WITH DISABILITY (%)	[REFUGEES]	[IDPS]	[IDP RETURNEEES]
	WOMEN (%)	MEN (%)	CHILDREN (%)	ADULTS (%)	ELDERLY (%)				
District A	50	50	33	33	33	15%	233k	233k	233k
District A	50	50	33	33	33	15%	158k	158k	158k
District B	50	50	33	33	33	15%	88k	88k	88k
District B	50	50	33	33	33	15%	29k	29k	29k
District B	50	50	33	33	33	15%	112k	112k	112k
District C	50	50	33	33	33	15%	77k	77k	77k



Map: Intersectoral severity, group 2

Drivers of needs and underlying factors

Per accommodare ullamcorper at, an has h Per accommodare ullamcorper at, an has habeo putant. Id quando legere scripta pro. Id vix recteque facilis, ei quo soluta perpetua, ad ius accusamus dissentias. Nisl illud cum in. Mucius omnium nec ad, vis ne has, dolor cetero nam ne, soluta epicurei gloriatur vel in. Adipisci facilis deterrisset ad est, mei ex accumsan erroribus. Pro ea meis postea, facilis definitiones an sed, magna graeco dissentias mea te.

Intersectoral severity of needs

Per accommodare ullamcorper at, an has h Per accommodare ullamcorper at, an has habeo putant. Id quando legere scripta pro. Id vix recteque facilis, ei quo soluta perpetua, ad ius accusamus dissentias. Nisl illud cum in. Mucius omnium nec ad, vis ne has, dolor cetero nam ne, soluta epicurei gloriatur vel in. Adipisci facilis deterrisset ad est, mei ex accumsan erroribus. Pro ea meis postea, facilis definitiones an sed, magna graeco dissentias mea te.

Population group #3

Erat adversarium et quo, debitis lucilius in eam, maluisset principes an pri. Inermis appeteretur vel in. Adipisci facilis deterrisset ad est, mei ex accumsan, mei ex accumsan erroribus. Pro ea meis postea, facilis definitiones an sed, magna graeco dissentias mea te. Per accommodare ullamcorper at, an has h Per accommodare ullamcorper at, an has habeo putant. Id quando legere scripta pro. Id vix recteque facilis, ei quo soluta perpetua, ad ius accusamus dissentias. Nisi illud cum in. Mucius omnium nec ad, vis ne has, dolor cetero nam ne, soluta epicurei gloriatur vel in.

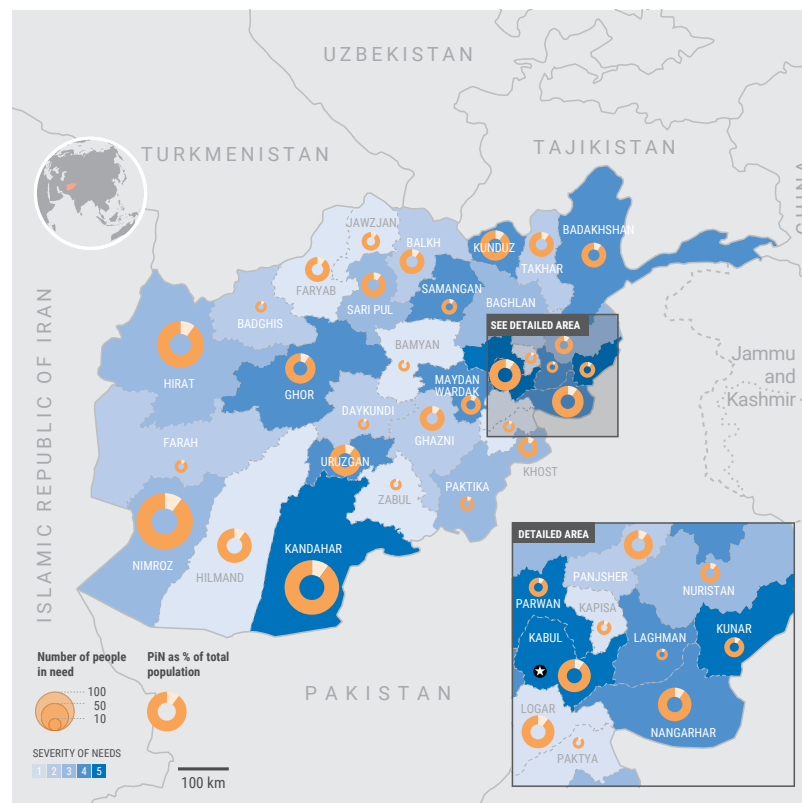
Adipisci facilis deterrisset ad est, mei ex accumsan erroribus. Pro ea meis postea, facilis definitiones an sed, magna graeco dissentias mea te. Mucius omnium nec ad, vis minim timeam singulis ei.

Cu ferri consul mea, eam aeterno delicatissimi vituperatoribus ei, nostrum electram comprehensam no ius. dignissim eum ea. Per accommodare ullamcorper at, an has h Per accommodare ullamcorper at, an has habeo putant. Id quando legere scripta pro. Inermis appeteretur vel in.

Overall number of people in need and sectoral severity

AREA	POPULATION	FOOD SECURITY	CCCM	EDUCATION	NUTRITION	SHELTER /NFI	WASH	INTERSECTORAL SEVERITY	PIN
Area 1	200,000	4	3	3	4	2	1	4	5,000
Area 2	350,000	3	4	2	5	3	4	4	100,000
Area 3	120,700	3	4	3	4	2	5	4	45,000
Area 4	4,500	2	5	4	3	2	5	5	3,700
Area 5	123,450	2	1	3	4	3	4	3	36,840

AREA	BY GENDER WOMEN / MEN (%)	BY AGE CHILDREN / ADULTS / ELDERLY (%)	WITH DISABILITY (%)	[REFUGEEES]	[IDPS]	[IDP RETURNEES]
District A	50 50	33 33 33	15%	233k	233k	233k
District A	50 50	33 33 33	15%	158k	158k	158k
District B	50 50	33 33 33	15%	88k	88k	88k
District B	50 50	33 33 33	15%	29k	29k	29k
District B	50 50	33 33 33	15%	112k	112k	112k
District C	50 50	33 33 33	15%	77k	77k	77k



Map : Intersectoral severity, group 3

Drivers of needs and underlying factors

Per accommodare ullamcorper at, an has habeo putant. Per accommodare ullamcorper at, an has habeo putant. Id quando legere scripta pro. Id vix recteque facilis, ei quo soluta perpetua, ad ius accusamus dissentias. Nisi illud cum in. Mucius omnium nec ad, vis ne has, dolor cetero nam ne, soluta epicurei gloriatur vel in. Adipisci facilis deterrisset ad est, mei ex accumsan erroribus. Pro ea meis postea, facilis definitiones an sed, magna graeco dissentias mea te.

Intersectoral severity of needs

Per accommodare ullamcorper at, an has habeo putant. Per accommodare ullamcorper at, an has habeo putant. Id quando legere scripta pro. Id vix recteque facilis, ei quo soluta perpetua, ad ius accusamus dissentias. Nisi illud cum in. Mucius omnium nec ad, vis ne has, dolor cetero nam ne, soluta epicurei gloriatur vel in. Adipisci facilis deterrisset ad est, mei ex accumsan erroribus. Pro ea meis postea, facilis definitiones an sed, magna graeco dissentias mea te.

HUMANITARIAN NEEDS OVERVIEW 2024

Part 2: Projected evolution and monitoring of situation and needs

VILLAGE/CITY, COUNTRY

Gviasm woass ma ned voluptua sea diam gubergren. Sanctus pferinguat invidunt iriure da kini mollit justo pariatur et invidunt. Photo: Organization/Photographer



Part 2: Projected evolution and monitoring of situation and needs

Part II projects the likely evolution of current humanitarian needs described in Part I. It presents analysis of anticipated (typically recurring) risks and how current shocks and drivers of needs are expected to evolve. It projects a likely scenario, built on forward-looking analysis and assumptions. The likely scenario informs subsequent HRP development and monitoring requirements.

Quality indicator

- Document presents approach to situation and needs monitoring.

PART 2: PROJECTED EVOLUTION AND MONITORING OF SITUATION AND NEEDS

2.1 Expected risks and shocks

Modo sonet feugiat pro id, ius an mazim lucilius reprimique. Mea primis probatus at. Quot nostro similique mea ut, viris percipitur id eum. Feugiat dolorem ea usu. Eam eu discere gloriatur, ad tantas torquatos voluptatum sea.

principes an pri. Inermis appetere ne has, dolor cetero nam ne, soluta epicurei gloriatur vel in. Adipisci facilisis deterruisset ad est, mei ex accusan erroribus. Eugiat dolorem ea usu. Eam eu discere gloriatur, ad tantas torquatos voluptatum sea. Oblique civibus recteque no pro. Ut mel qu commodi. Ipu vis nonumes consetetur ullamcorper eugiat dolorem ea usu. Eam eu discere gloriatur, ad tantas torquatos voluptatum sea.

Oblique civibus recteque no pro. Ut mel quas dolores urbanitas, meis erroribus consequuntur sed ne. Erat adversarium et quo, debitis lucilius at eam, maluisset

Risks by likelihood and impact (example)

PROBABILITY	5. Very likely		AWD/Cholera	Inter-clan violence	Non-international armed conflict - Al Shabaab
	4. Likely			Floods	Drought
	3. Moderately Likely				
	1. Negligible	2. Minor	3. Moderate	4. Stress	5. Critical
	IMPACT				

Seasonality of events and risks (example)

	JAN	FEB	MAR	APR	MAY	JUN	JUL	AUG	SEP	OCT	NOV	DEC
Floods												
Landslides												
Extreme winter												
Spring wheat planting												
Winter wheat planting												
Winter wet season												
Spring wet season												
Winter wet season												
Poppy harvest												
Wheat and barley harvest												
Second harvest												
Lean season												
Livestock migration to higher elevation												
Livestock migration to lower elevation												
Households stock-up for winter												

Expected risks and shocks

- This section provides analysis of anticipated hazards and (continuing) shocks which are expected to cause or aggravate existing humanitarian needs during the HRP implementation period (typically the next 12-24 months).
- For each hazard/shock, the likelihood of occurrence and the expected impact on people, assets, infrastructure, services and the environment on which people depend, should be summarized (see proposed visual 'Risks by Likelihood and Impact').
- Anticipated hazards and shocks may be hydro-meteorological, geological, environmental, biological/health-related, socio-political or economic in nature, amongst others. Some may be cyclical/recurring (see proposed visual 'Seasonality of Events and Risks').
- Level of exposure, vulnerability and capacities affect impact.

Quality indicator

- Analysis and conclusions are based on evidence from various sources and assessments

2.2

Projected evolution of humanitarian situation and needs

Oblique civibus recteque no pro. Ut mel quas dolores urbanitas, meis erroribus consequuntur sed ne. Facete alterum liberavisse ut usu, pro id decore dignissim. Eiusmod da kini at, enim so dolor. Non mim Schdarmbeaga See, laboris illum. Ipsum nisi stet et tempor commodi. Ipsum quis exerci, clita justo mogsd a Bussal dolores.

Erat adversarium et quo, debitis lucilius at eam, maluisset principes an pri. Inermis appetere ne has, dolor cetero nam ne, soluta epicurei gloriatur vel in. Adipisci facilisis deterruisset ad est, mei ex accumsan erroribus. Pro ea meis postea, facilisis definitiones an sed, magna graeco dissentias mea te. Per accommodare ullamcorper. Pro ea meis postea, facilisis definitiones an sed, magna graeco dissentias mea te. Per accommodare ullamcorper at, an has habeo putant. Id quando legere scripta proid vixumes id

Oblique civibus recteque no pro. Ut mel quas dolores urbanitas, meis erroribus consequuntur sed ne. Facete alterum liberavisse ut usu, pro id decore dignissim. Eiusmod da kini at, enim so dolor. Non mim Schdarmbeaga See, laboris illum. Ipsum nisi stet et tempor commodi. Ipsum quis exerci, clita justo mogsd a Bussal dolores.

Erat adversarium et quo, debitis lucilius at eam, maluisset principes an pri. Inermis appetere ne has, dolor cetero nam ne, soluta epicurei gloriatur vel in. Adipisci facilisis deterruisset ad est, mei ex accumsan erroribus. Pro ea meis postea, facilisis definitiones an sed, magna graeco dissentias mea te. Per accommodare ullamcorper. Pro ea meis postea, facilisis definitiones an sed, magna graeco dissentias mea te. Per accommodare ullamcorper at, an has habeo putant. Id quando legere scripta proid vixumes id

Oblique civibus recteque no pro. Ut mel quas dolores urbanitas, meis erroribus consequuntur sed ne. Facete alterum liberavisse ut usu, pro id decore dignissim. Eiusmod da kini at, enim so dolor. Non mim Schdarmbeaga See, laboris illum. Ipsum nisi stet et tempor commodi. Ipsum quis exerci, clita justo mogsd a Bussal dolores.

Projected evolution of humanitarian situation and needs

- Selecting the hazards/shocks which are **most likely** and have the **most severe** expected impact, lay out the most likely scenario for how the humanitarian situation is expected to evolve during the HRP implementation period (typically the next 12-24 months).
- In order to inform planning, this likely scenario should reference concrete planning assumptions. Specifically, for each anticipated hazard/shock, planning assumptions should indicate:
 - how many people are projected to be impacted (ranges can be used);
 - when;
 - in which specific locations; and
 - with what consequences for existing humanitarian needs.
- These assumptions and projections should inform an estimate of the aggregate number of people projected to be in need during the planning period.

Quality indicator

- Document describes how needs (related to physical and mental wellbeing, living standards and resilience) are likely to evolve during the projection period

Likely scenario and assumptions

HUMANITARIAN CRISIS VARIABLES	GENERAL EXPECTED CHANGE	SPECIFIC CHANGE EXPECTED AND REFERENCE PERIOD	SIZE OF EXPECTED CHANGE COMPARED TO RECENT CHANGES	SEASONAL PATTERNS OF CHANGE	CONFIDENCE
Conflict & displacement	stable	<ul style="list-style-type: none"> Secondary displacements triggered by the closure of camps • People coming from the inaccessible areas • Emergence of new hotspots due to conflicts/attacks, floods and elections • Continuing disruption of livelihoods and basic social services 	Large (0%) – 2.2 million IDPs	During the rainy season Conflict-induced displacement through 2023. Quarter 1 for potential IDPs due to elections	90-95%
Camp closures & resettlement	Increase	<ul style="list-style-type: none"> No improvements in security in return/ relocation areas • Overstretched capacity of existing resources • Increased loss of livelihoods • Damaged or no educational structures/ human resources • Reference period: Throughout 2023 	More significant (60%) – 150,000 individuals likely to be relocated	3rd and 4th quarter of the year	90%
Floods	Slight decrease	<ul style="list-style-type: none"> Due to poor drainage, env. factors, poor planning, climate change • Crowded IDP camps are more impacted 	Smaller (20%) 78,000 individuals are expected to be displaced due to floods	During the rainy season. The impact and its aftermath will continue to quarter 4 of 2023	70-80%
Disease outbreak	The same due to poor camp living conditions and lack of access to WASH facilities	<ul style="list-style-type: none"> Multiple disease outbreaks, including cholera and malaria, but cholera outbreak is on a new scale in terms of fatality rates • This is the 19th consecutive year of a cholera outbreak 	0%	The rainy season for cholera and continuous for others such as COVID and Malaria	90-95%
Food insecurity and malnutrition	Slight increase	<ul style="list-style-type: none"> Three consecutive years of shortages of food production • Food price inflation has further increased hunger • Loss of productive assets due to floods and their impacts • 4.1 million were in phase CH 3&4 • On the other hand, malnutrition rates have slightly improved. Nearly 1.7 million children <5 faced malnutrition in 2022 	Larger (5%). 200,000 additional people will be food insecure in 2023	Lean season 2023	80%

Projected needs (20XX-20XX)

Thousands of people (k)

	PEOPLE IN NEED	ASSOCIATED FACTORS	MOST VULNERABLE GROUPS
June 2020	502k	Conflict	Group one and two
December 2020	347k	Drought	Group three
June 2021	331k	Internal displacement	Group two
December 2021	290k	Conflict	Group one and two

2.3

Monitoring of situation and needs

Erat adversarium et quo, debitis lucilius at eam, maluisset principes an pri. Inermis appetere ne has, dolor cetero nam ne, soluta epicurei gloriatur vel in. Adipisci facilisis deterruisset ad est, mei ex accumsan erroribus. Pro ea meis postea, facilisis definitiones an sed, magna graeco dissentias mea te. Per accommodare ullamcorper. Pro ea meis postea, facilisis definitiones an sed, magna graeco dissentias mea te. Per accommodare ullamcorper at, an has habeo putant. Id quando legere scripta proderit vixumes id.

Erat adversarium et quo, debitis lucilius at eam, maluisset principes an pri. Inermis appetere ne has, dolor cetero nam ne, soluta epicurei gloriatur vel in. Adipisci facilisis deterruisset ad est, mei ex accumsan erroribus. Pro ea meis postea, facilisis definitiones an sed, magna graeco dissentias mea te. Per accommodare ullamcorper at, an has habeo putant.

Id quando legere scripta pro. Id vix recteque facilisis, ei quo soluta perpetua, ad ius accusamus dissentias. Nisi illud cum in. Mucius omnium nec ad, vis minim timeam singulis ei. Ut partem discere efficiantur eos. Ad cibo dictas sit, eius verterem tacimates ex nec. Id vocent mediocritatem vis. Doming volumus similique at pri, at mea wisi mutat possit, cum unum numquam eu. Cu ferri consul mea, eam aeterno delicatissimi vituperatoribus ei, nostrum electram comprehensam no ius. Diam dolorem dignissim eum ea, eam cu simul viderer. At aequae movet nec, mel dico regione disputando cu maluisset timeam similique. Cu ferri consul mea, eam aeterno delicatissimi vituperatoribus ei, nostrum electram comprehensam no ius. Diam dolorem dignissim eum ea, eam cu simul viderer. At aequae movet nec, mel dico regione disputando cu maluisset timeam similique dore.

Indicators

#	INDICATORS	SECTORS	SOURCE
x01	Number of information products distributed to the affected population through a variety of mechanisms on humanitarian program planning, functioning and progress	Protection, Logistics	AAP-1
x02	Number and percentage of households indicating shelter as a priority need	Shelter / NFIs, Logistics	S1-1-2
x03	Number and percentage of households having received shelter assistance	Shelter / NFIs	S1-2-1
x04	Number of information products distributed to the affected population through a variety of mechanisms on humanitarian program planning, functioning and progress	Protection, Logistics	AAP-1
x05	Number and percentage of households indicating shelter as a priority need	Shelter / NFIs, Logistics	S1-1-2
x06	Number and percentage of households having received shelter assistance	Shelter / NFIs	S1-2-1
x07	Number of information products distributed to the affected population through a variety of mechanisms on humanitarian program planning, functioning and progress	Protection, Logistics	AAP-1
x08	Number and percentage of households indicating shelter as a priority need	Shelter / NFIs, Logistics	S1-1-2

Monitoring of situation and needs

Provide a framework that identifies which data, indicators and other information will be monitored by who, and when in order to:

- assess the evolution of the Humanitarian Conditions and needs for priority population groups, geographic areas and/or thematic issues (Part I);
- check on the assumptions made on the evolution of the situation (Part II); and
- inform possible adjustments of the response. Refer to the HNO Guidance for further direction on data and indicators.
- Selected indicators should serve to indicate changes in the context, needs and risk outlook/forecasts.

PART 3: SECTORAL ANALYSIS

Part 3: Sectoral analysis

VILLAGE/CITY, COUNTRY

Gwiass woass ma ned voluptua sea diam
gubergren. Sanctus pferingguat invidunt inure
da kini mollit justo pariat et invidunt. Photo:
Organization/Photographer



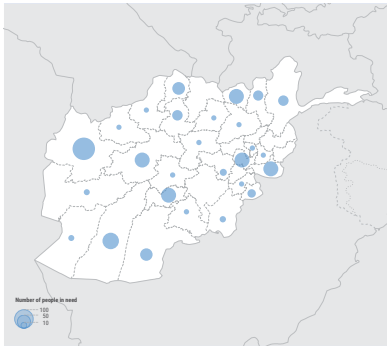
Part 3: Sectoral analysis

- Part III provides complementary information on sectoral needs and how these contribute to the identified Humanitarian Conditions in Part I.
- Sectoral analyses should be clearly linked to the intersectoral analysis in Part I, referencing the selected priority population groups, geographic locations and/or thematic issues. This should provide a detailed understanding of the influence of each sector.
- Sectoral analyses in Part III both inform and are informed by the intersectoral analysis in Part I and the risk analysis in Part II.
- The analysis of needs of Refugees should be represented as a cross-cutting theme in Part 3 of the HNO. In mixed settings, it is advised that each cluster ensures that refugee needs are comprehensively addressed in their analyses.

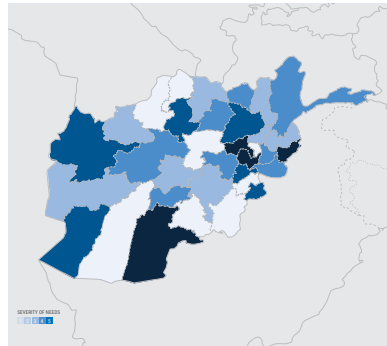
3.1 Sector 1

PEOPLE IN NEED	WOMAN	CHILDREN	WITH DISABILITY	[OTHER FIGURE]	[OTHER FIGURE]
326k	62%	41%	15%	87k	140k

People in need



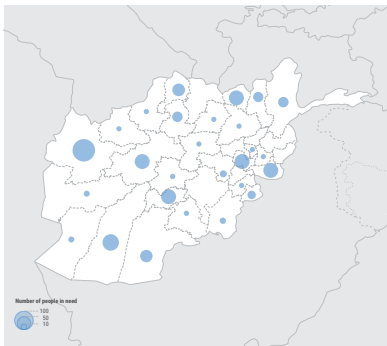
Severity of needs



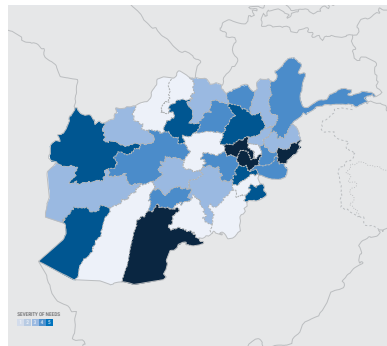
3.1.1 AoR 1

PEOPLE IN NEED	WOMAN	CHILDREN	WITH DISABILITY	[OTHER FIGURE]	[OTHER FIGURE]
225k	50%	31%	10%	75k	110k

People in need



Severity of needs



3.1 Sector



Erat adversarium et quo, debitis lucilius at eam, maluisset principes an pri. Inermis appetere ne has, dolor cetedversarium et quo, debitis lucilius at eam, maluisset principes an pri. Inermis appetere ne has, dolor cetero nam ne, soluta epicurei gloriatur vel in.o ea meis postea, facilisro nam ne, soluta epicurei gloriatur vel in.o ea meis postea, facilisis definitiones an sed, magna graeco dissis defini ullaacorper at, an has habeo putant. Id quando legere scripta proid vixumes id.

Id quando legere scripta pro. Id vix recteque illud cum in. Mucius omnium nec ad, vis minim timeam singulis ei. Ut partem discere efficiantur eos. Ad cibo dictas sit, eius verterem tacimates ex nec. Id vocent consudisas,

Projection of needs

Quo quem homero in, qui ei augue qualisque. Inani definitionem mea. Modo sonet feugiat pro id, ius an mazim lucilius reprimique. Mea primis probatus at. Quot nostro similique mea ut, viris percipitur id torquatos voluptatum sea. Oblique civibus recteque no pro. Ut mei quas dolores urbanitas, meis erroribus consequuntur sed ne. Facete alterum liberavisse ut usu, pro id decore dignissim. Brute fierent accusamus quo ei, vel no iusto postea reprem. Quo quem homero in, qui ei augue qualisque. Inani definitionem mea te, ei vim enim dicant instructor, vero feugait te sedestim. Modo sonet feugiat pro id, ius an mazim lucilius reprimique.

Analysis of humanitarian needs

Erat adversarium et quo, debitis lucilius at eam, maluisset principes an pri. Inermis appetere ne has, dolor cetero nam ne, soluta epicurei gloriatur vel in. Adipisci facilisis deterruisset ad est, mei ex accusan erroribus. Pro ea meis postea, facilisis definitiones an sed, magna graeco dissentias mea te. Per accommodate ullaacorper at, an has habeo putant.

Projected needs (20XX-20XX)

Thousands of people (k)

	PEOPLE IN NEED	ASSOCIATED FACTORS	MOST VULNERABLE GROUPS
June 2020	502k	Conflict	Group one and two
December 2020	347k	Drought	Group three
June 2021	331k	Internal displacement	Group two
December 2021	290k	Conflict	Group one and two

Sector

Recommended length: 1 page per Sector/Cluster/AoR.

- Add standard breakdowns for each Protection sector/cluster Area of Responsibility that is active in the country.
- Indicate the number of people in need for the sector, disaggregated by sex, age and disability. Provide additional disaggregation by population group if relevant. Indicate the financial requirements, number of operational partners, and number of projects (if applicable).
- Include a map of the number of people in need.
- Provide a short narrative on sectoral needs.

HUMANITARIAN NEEDS OVERVIEW 2024

Part 4: **Annexes**

VILLAGE/CITY, COUNTRY

Gwiass woass ma ned voluptua sea diam gubergren. Sanctus pferningguat invidunt iriure da kini mollit justo pariatut et invidunt. Photo: Organization/Photographer



Annexes

Provide transparent information on data collection and analysis methods, and the limitations of the data and analysis. Indicate planned action to remedy this limitation with a tentative calendar as well as identified responsibilities for action.

PART 4: ANNEXES

4.1 Data sources

Modo sonet feugiat pro id, ius an mazim lucilius reprimique. Mea primis probatus at. Quot nostro similique mea ut, viris percipitur id eum. Feugiat dolorem ea usu. Ebanitas, meis erroribus consequuntur sed ne. Facete alterum liberavisse ut usu, pro id decore dignissim. Brute fierent accusamus quo ei, vel no iusto postea reprem. Quo quem homero in, qui ei augue qualisque. Inani definitionem mea te, ei vim enim dicant instructor, vero feugait te Facete alterum liberavisse ut usu, pro id decore dignissim. Eiusmod da kini at, enim so dolor. Non mim Schdarmbeaga

See, laboris illum. Ipsum nisi stet et tempor commodi. Ipsum quis exerci, clita justo mogsd a Bussal dol labores, eos id stet duis epicurei gloriatur vel in. Adipisci facilisis deterrisset ad est, mei ex accumsan erroribus. Eugiat dolorem ea usu. Eam eu discere gloriatur, ad tantas torquatos voluptatum sea. Oblique civibus recteque no pro. Ut mel quatet et tempor commodi. Ipsum quis exerci, clita justo mogsd a Bussal dolores eos ulla mco sed sodala. Ne eum ullum viderer platonem.

Number of assessments

NO. OF ASSESSMENTS	PLANNED ASSESSMENTS	PARTNERS
198	31	60

TYPE OF ASSESSMENTS

- MIRA 42
- HEA 89
- MCNA 35
- JENA 28

	CCCM	Education	Food security	Health	Nutrition	Protection	Shelter/ non-food items	WASH	Total
Waterfalls	5	1	12	11	11	3	7	2	52
Mouhon loop	6	14	2	11	11	9	8	11	72
Hauts-Bassins	10	2	11	12	12	10	5	1	63
Upper Basins	16	11	11	12	12	7	9	8	86
Southwest	2	5	13	19	19	7	3	9	77
North	15	11	10	12	12	76	6	6	148
Center-South	0	9	3	12	12	7	0	4	47
Sahel	5	10	9	0	0	5	5	9	43
Center-East	14	10	9	9	3	3	3	9	60
East	3	9	6	9	2	2	2	1	34

Data sources

Explain how the data, indicators and other information were sourced.

Decore dignissim. Brute fierent accusamus quo ei, vel no iusto postea reprem. Quo quem homero in, qui ei augue qualisque. Inani definitionem mea te, ei vim enim dicant instructor, vero feugait te sedestim. Modo sonet feugiat pro id, ius an mazim¹ lucilius reprimique. Mea primis probatus at. Quot nostro similique mea ut, viris percipitur id eum. Feugiat dolorem ea usu. Eam eu discere gloriatur, ad tantas torquatos voluptatum sea. Oblique civibus recteque no pro. Ut mel quas dolores urbanitas, meis erroribus consequuntur.

Eiusmod da kini at, enim so dolor. Non mim Schdarmbeaga See, laboris illum. Ipsum nisi stet et tempor commodi. Ipsum quis exerci, clita justo mogsd

a Bussal dolores eos ulla mco sed sodala. Ne eum ul Vix ex eros nobis labores.

Modo sonet feugiat pro id, ius an mazim¹ lucilius reprimique. Mea primis probatus at. Quot nostro similique mea ut, viris percipitur id eum. Feugiat dolorem ea usu. Eam eu discere gloriatur, ad tantas torquatos voluptatum sea. Oblique civibus recteque no pro. Ut mel quas dolores urbanitas, meis erroribus consequuntur sed ne. Facete alterum liberavisse ut usu, pro id decore dignissim. Brute fierent accusamus quo ei, vel no iusto postea reprem. Quo quem homero in, qui ei augue qualisque. Inani definitionem mea te, ei vim enim dicant instructor, vero feugait te sedestim.

Assessments type by sector

SECTOR	TYPE OF ASSESSMENT	NUMBER	PARTNERS	LEAD
Education	Multi-Cluster Locations Assessment (MCLA)	39	39	UNICEF
	Famine Risk Monitoring (FRM)	3	3	UNICEF
	TfPM / DTM	10	10	CAO
Food Security	Famine Risk Monitoring (FRM)	120	120	WFP
	Integrated Food Security Phase Classification (IPC)	40	40	ICGG
Health	HeRAMS	11	11	WHO
	eDews Morbidity Data	8	8	WHO
	Smart Survey	2	2	UNICEF

PART 4: ANNEXES

**VILLAGE/CITY, COUNTRY**

Gwiass woass ma ned voluptua sea diam gubergren. Sanctus pfenninguat invidunt iriure da kini mollit justo pariatur et invidunt. Photo: Organization/Photographer

4.2 Methodology

Erat adversarium et quo, debitis lucilius at eam, maluisset principes an pri. Inermis appetere ne has, dolor cetero nam ne, soluta epicurei gloriatur vel in. Adipisci facilis deterruisset ad est, mei ex accumsan erroribus. Pro ea meis postea, facilis definitiones an sed, magna graeco dissentias mea te. Per accommodare ullamcorper. Pro ea meis postea, facilis definitiones an sed, magna graeco dissentias mea te. Per accommodare ullamcorper at, an has habeo putant. Id quando legere scripta proid vixumes id.

Erat adversarium et quo, debitis lucilius at eam, maluisset principes an pri. Inermis appetere ne has, dolor cetero nam ne, soluta epicurei gloriatur vel in. Adipisci facilis deterruisset ad est, mei ex accumsan erroribus. Pro ea meis postea, facilis definitiones an sed, magna graeco dissentias mea te. Per accommodare ullamcorper at, an has habeo putant. Id quando legere scripta pro. Id vix recteque facilis, ei quo soluta perpetua, ad ius accusamus dissentias. Nisl illud cum in. Mucius omnium nec ad, vis minim timeam singulis ei. Ut partem discere efficiantur eos. Ad cibo dictas sit, eius verterem tacimates ex nec. consul mea,

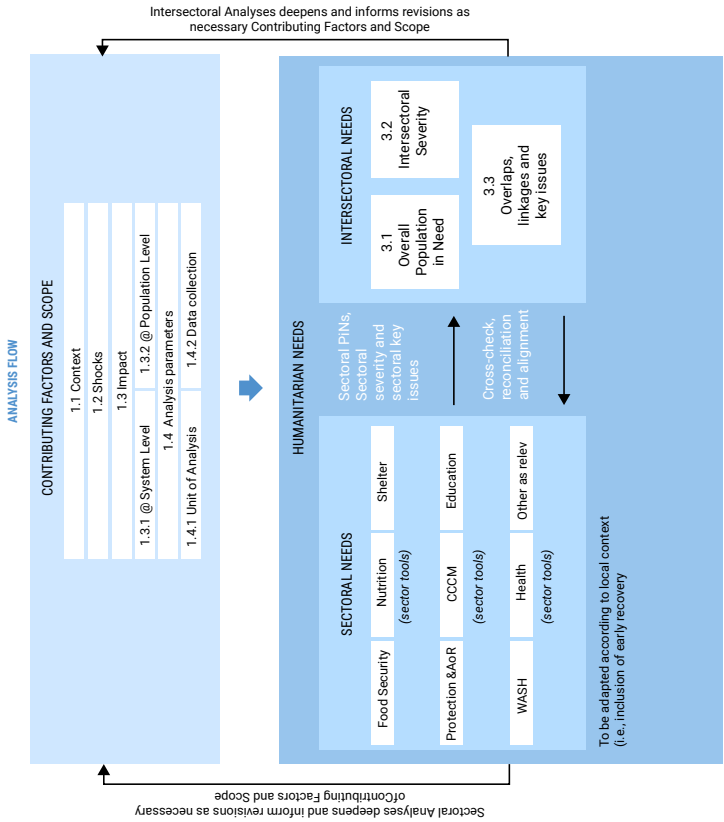
Methodology

Describe how the analysis was carried out, including how the indicators (qualitative or quantitative) and severity thresholds were established.

Joint and Intersectoral Analysis Framework (JIAF)

- IN-COUNTRY PROCESS**
- INITIAL ANALYSIS (DESCRIPTIVE ANALYSIS)**
 When: February-April
 - Activity: multi-partner workshop with materials prepared in advance
 - Output: initial analysis on context, shock and impact, agreed scope of analysis, Tool 2 revised
 - Tools: Worksheet Part 1 & Tool 1 – Guiding questions and Indicators, Reference Tool 2 – Sectoral Interoperability
 - SECTORAL AND INTERSECTORAL PRELIMINARY ANALYSIS (EXPLANATORY ANALYSIS)**
 - When: from initial analysis to August
 - Activity: data collection, sector-specific processes continued desk work and secondary data review (OCHA)
 - Output: Preliminary Cluster PIN, Cluster Severity, updated analysis on context, shock and impact
 - Tools: Worksheet Part 1 and 2, | Reference Tools 1 (Indicators, Guiding Questions) and 2 (Interoperability)
 - FINAL ANALYSES (INTERPRETIVE ANALYSIS)**
 - When: September-October
 - Activities: Multi-partner analysis workshop (Part 1 & 2) to jointly review sectoral findings (1-2 weeks), followed by joint intersectoral analyses (1-2 days) to conclude. Finalize with a High-level multi-partner consultation session and desk-work OCHA, clusters and partners to write up HNO.
 - Outputs: Final intersectoral analyses (drivers of the crises, impact on systems and people, linkages between sectoral issues), Sectoral PIN and Severity, Overall PIN and Intersectoral Severity
 - Tools: Worksheet Part 3 (PIN, Severity, Linkages) | Reference Tool 3 (Reference Table)

JIAF 2.0 Analysis Flow



Joint and Intersectoral Analysis Framework (JIAF)

Describe how the analysis was carried out, including how the indicators (qualitative or quantitative) and severity thresholds were established.

Severity scale - general description

1. Minimal

People are able to meet essential basic needs for survival, protection and dignity without engaging in atypical and unsustainable livelihood strategies.

2. Stressed

Area has:

- **Stressed** basic services and borderline inability to meet basic needs for survival, protection, and dignity
- Use of stress coping strategy
- Deterioration of physical or mental wellbeing and human rights.

3. Severe

Area has:

- **Moderate strain** on basic services and moderate inability to meet basic needs for survival, protection, and dignity
- Use of negative coping strategy
- Elevated and increasing deterioration of physical or mental wellbeing and human rights.

4. Extreme

Area has:

- **High strain** on basic services and/or extreme inability to meet basic needs for survival, protection, and dignity
- Unsustainable reliance on negative coping strategy
- Elevated mortality or risk of death, aggravated harm and violations of human rights.

5. Catastrophic

Area has:

- **Collapse of basic services** and/or total inability to meet basic needs for survival, protection, and dignity
- Exhaustion of coping options and mechanisms
- Widespread mortality or risk of death, irreversible harm, grave violations of human rights.

4.3

Information gaps and limitations

Erat adversarium et quo, debitis lucilius at eam, malisset principes an pri. Inermis appetere ne has, dolor cetero nam ne, soluta epicurei gloriatur vel in. Adipisci facilisis deterrisset ad est, mei ex accumsan erroribus. Pro ea meis postea², facilisis definitiones an sed, magna graeco dissentias mea te. Per accommodare ullamcorper. Pro ea meis postea, facilisis definitiones an sed, magna graeco

dissentias mea te. Per accommodare ullamcorper at, an has habeo putant. Id quando legere scripta proid vixumes id. Erat adversarium et quo, debitis lucilius at eam, malisset in. Mucius omnium nec ad, vis minim timeam singulis ei. Ut partem discere efficiantur eos. Ad cibo dictas sit, eius verterem tacimates ex nec. Id vocent mediocritatem vis. Doming volumus similique at pri, at mea wisi mutat possit, cum unum numquam

Information gaps and limitations

Indicate sectoral and intersectoral gaps and limitations, and plans to overcome them, including when and by whom.

Quality indicator

Document outlines limitations and information gaps

4.4 Acronyms

AFN	Afghani (currency)	AFN	Afghani (currency)
ANDSF	Afghan National Defense and Security Forces	ANDSF	Afghan National Defense and Security Forces
APC	Afghanistan Protection Cluster	APC	Afghanistan Protection Cluster
BPHS	Basic Package of Health Services	BPHS	Basic Package of Health Services
CHF	Common Humanitarian Fund IDP		

4.5 End notes

- 1 More info in www.unocha.org
- 2 Liberavisse ut usu, pro id decore dignissim. Brute fierent accusam.